



# **Benta Vision**

*Your Complete Ophthalmic Solution Provider*

[www.bpi.com.lb](http://www.bpi.com.lb)

## A Better Vision, A Wider Vision

Benta Vision is committed to provide a complete solution for the global ophthalmic market ranging from Intra Ocular Lenses (IOL) for Cataract to bandage lenses and ophthalmic work stations in addition to a wide range of ophthalmic pharmaceutical products.



## Our Ophthalmic Products

### IntraOcular Lenses

- ▶ Hydrophobic single- piece IOL with yellow UV filter
- ▶ Hydrophobic three-piece IOL with blue UV filter
- ▶ Single - piece Hydrophilic IOL with blue UV filter



## Benta Vision Production Unit

Benta Vision Production Unit, the only intraocular lenses (IOL) manufacturing facility in the Middle East, produces high quality, innovative ophthalmic surgical and eye care products.

Benta set a custom-built facility equipped with advanced machines under a controlled clean room environment. A team of ophthalmology experts' helps providing the market with the latest eye care technologies based on the European guidelines and the requirements of ISO 11979, ISO 13485 and ISO 9001.



## Sterile Ophthalmic Solutions (Pipeline)

### Anti-Glaucoma

- ▶ Timolol 0.25 %
- ▶ Timolol 0.5 %
- ▶ Timolol 0.5%+ Dorzolamide 2 %



### Artificial Tears

- ▶ Hypromellose 0.3%
- ▶ Carmellose 0.5 %



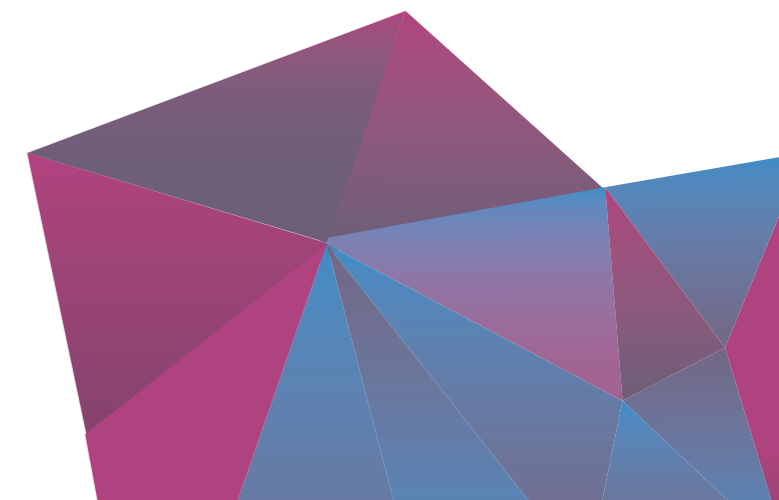
### Anti-Infectives

- ▶ Levofloxacin 0.5 %
- ▶ Ciprofloxacin 0.3 %
- ▶ CiprofloxacinHCL 0.25 % + Dexamethasone 1 %



### Ocular & Cataract Surgery

- ▶ Sodium Hyaluronate 1% medium viscosity dispersive
- ▶ Sodium Hyaluronate 1.4% viscous cohesive
- ▶ Sodium Hyaluronate 3% super viscous cohesive



## Ophthalmic Work Stations

Benta supplies the market with a range of versatile and high-tech ophthalmic work stations that serve the needs and expectations of the surgeon.



## Bandage Contact Lenses

Benta offers a range of bandage contact lenses. These lenses may be used to provide epithelium healing where there are persistent corneal epithelial defect.

**Benta Vision**

Zouk el Khrab 104, Dbayeh  
P.O. Box:55 191, Lebanon  
T. +961 4 545000 . F. +961 4 541333  
[info@bpi.com.lb](mailto:info@bpi.com.lb) [www.bpi.com.lb](http://www.bpi.com.lb)

Follow BPI



**CE GMP**